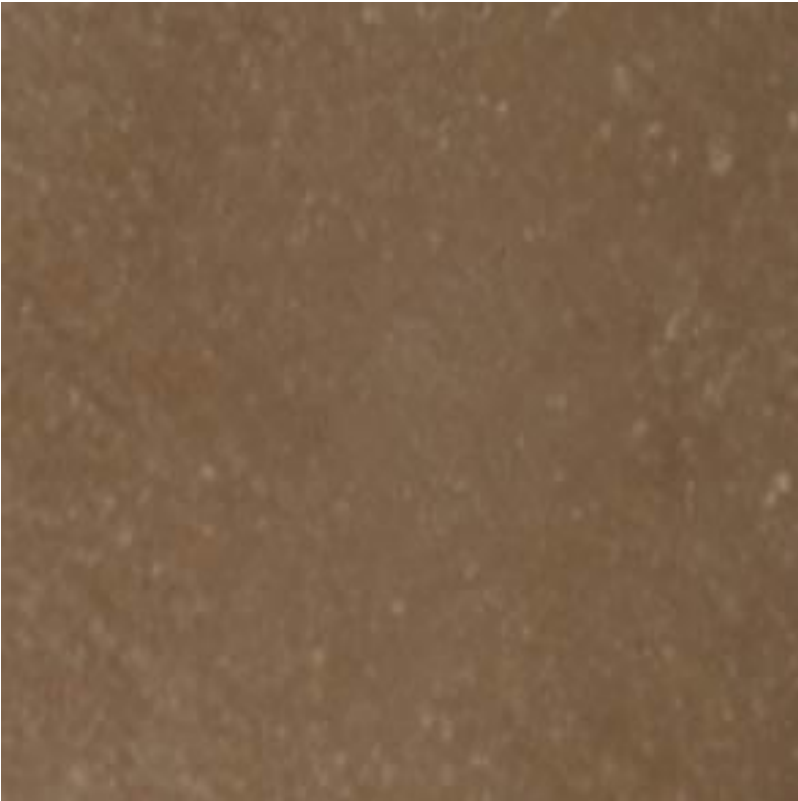
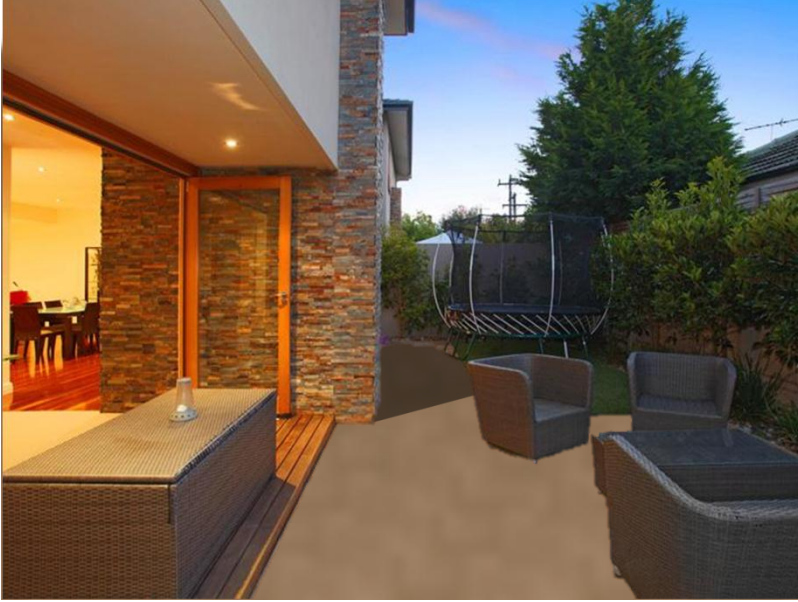


COMPUTER GENERATED IMAGE (indicative of the actual product only)



INDICATIVE OF FINISHED APPEARANCE

There are likely to be variations in consistency of colours and textures, appearance and quality in the finished product of the hardened concrete, as the raw ingredients are natural and subject to variations beyond our control. Whilst every effort has been made to match the colours in the preparation of this document, reproductive processes will alter the actual appearance in the concrete products to varying degrees.

The concrete samples shown are indicative only of the finished concrete product, and no guarantee of the colours or textures of the product is given or implied by this document.

PRODUCT NAME:

CATACOMB TROWEL FINISH

Catacomb Pigment, Normal Class
25MPa grey cement concrete with a
trowel finish.

Things you should know

The texture of trowelled concrete can vary significantly - ranging from a rough stipple to a very smooth tight surface finish.

The finished texture will vary the perceived colour.

SPECIFICATION:

Vic Mix Grey 25MPa Normal
Class Concrete
Catacomb Pigment

ORDER CODE:

N25G + OXCAT

REVISION: 01/06/2011